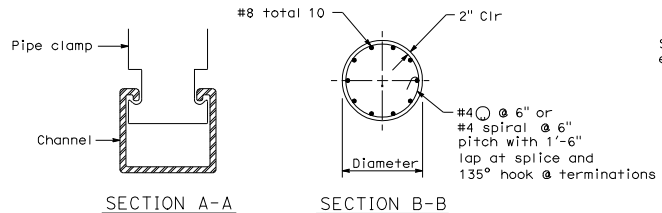


REAR VIEW

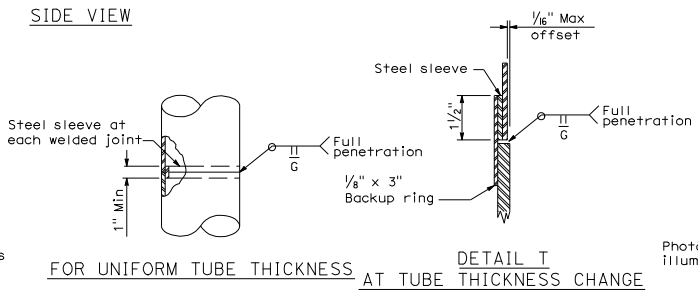
SIDE VIEW

DETAIL U  
SIGN MOUNTING DETAILS

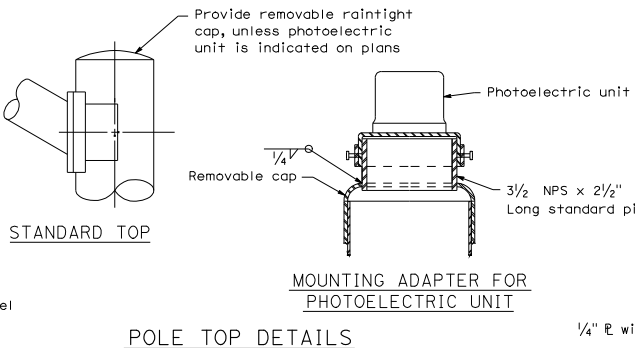


SECTION A-A

SECTION B-B



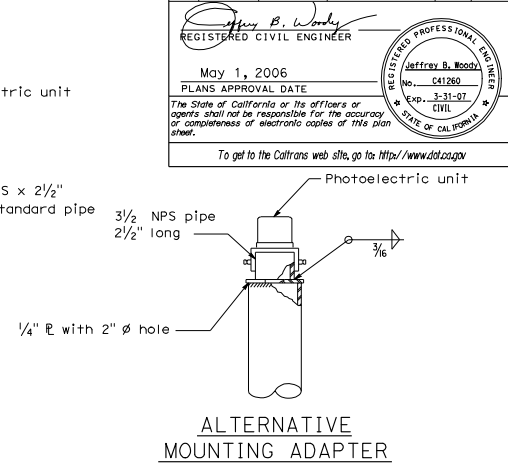
DETAIL T  
FOR UNIFORM TUBE THICKNESS AT TUBE THICKNESS CHANGE  
POLE SPLICES



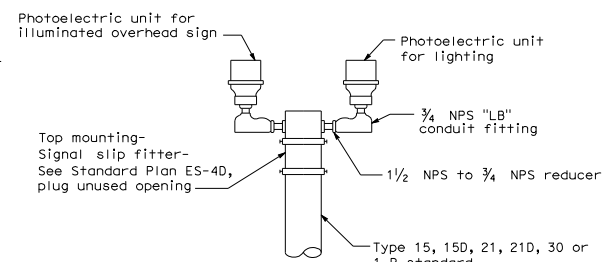
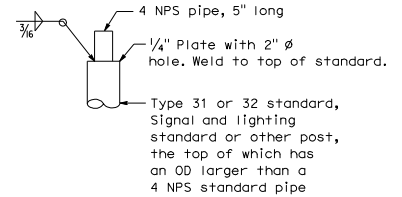
STANDARD TOP

POLE TOP DETAILS

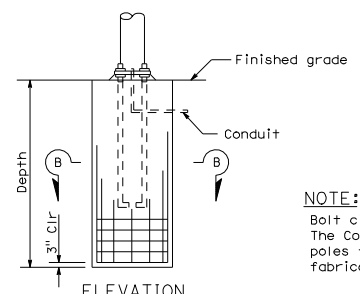
MOUNTING ADAPTER FOR PHOTOELECTRIC UNIT



ALTERNATIVE MOUNTING ADAPTER



DUAL PHOTOELECTRIC UNIT MOUNTING DETAIL



ELEVATION  
CAST-IN-DRILLED HOLE PILE FOUNDATION  
Reinforced Pile

**NOTE:**  
Bolt circles and anchor bolt sizes have been revised. The Contractor shall verify dependent dimensions for poles to be installed on existing foundations before fabricating the poles.

DIST	COUNTY	ROUTE	POST MILES TOTAL PROJECT	SHEET NO.	TOTAL SHEETS

**Jeffrey B. Woody**  
 REGISTERED CIVIL ENGINEER  
 No. C41260  
 Exp. 3-31-07  
 CIVIL  
 STATE OF CALIFORNIA

May 1, 2006  
 PLANS APPROVAL DATE

The State of California or its officers or agents shall not be responsible for the accuracy or completeness of electronic copies of this plan sheet.

To get to the Caltrans web site, go to <http://www.dot.ca.gov>

STATE OF CALIFORNIA  
 DEPARTMENT OF TRANSPORTATION  
**ELECTRICAL SYSTEMS  
 (SIGNAL AND LIGHTING  
 STANDARDS  
 DETAILS No. 2)**  
 NO SCALE