

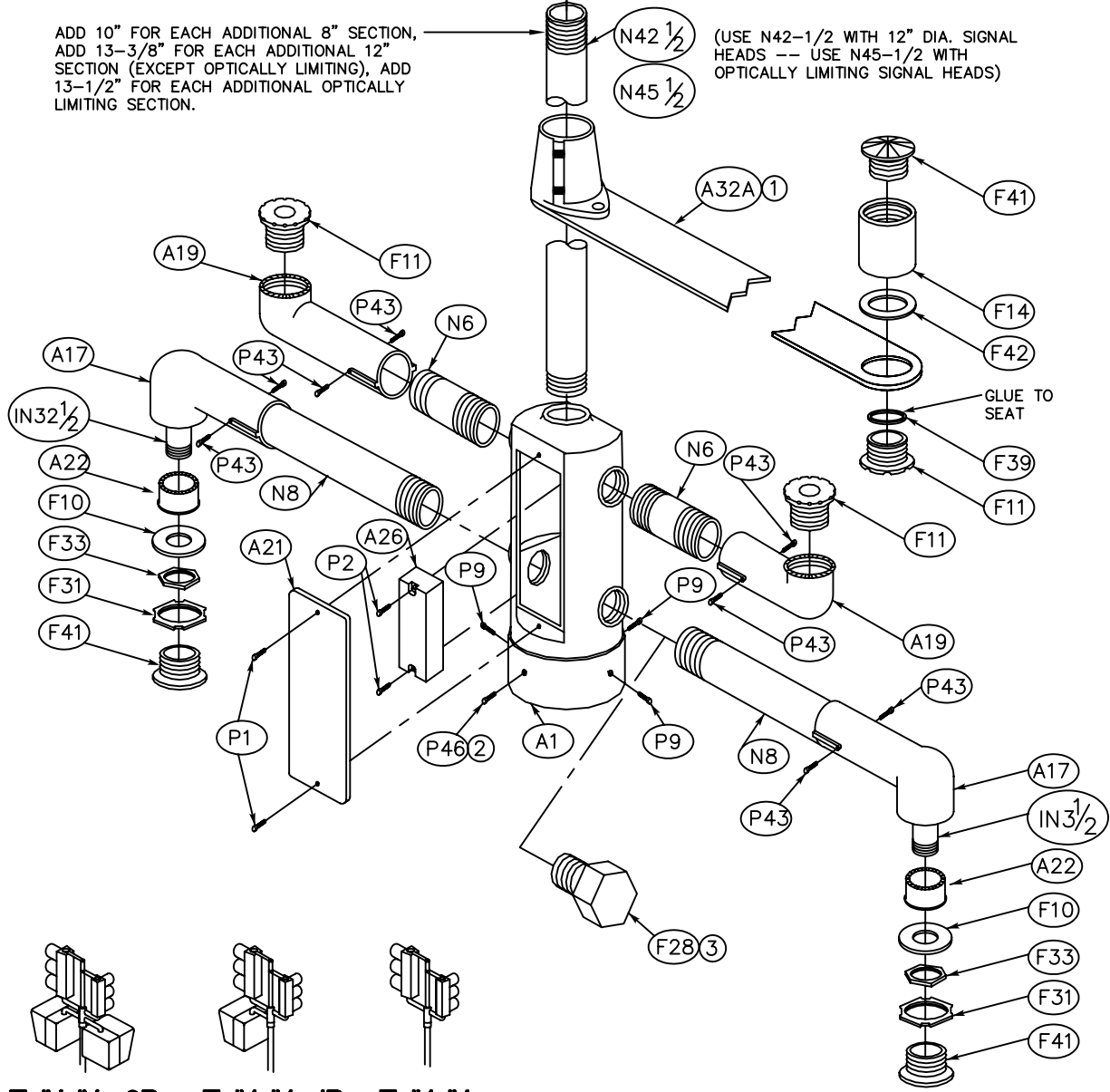
1. FOR A32A TIE BRACE FASTEN SPEEDRAIL #47 1-1/2" FITTING TO A32 FLAT BAR BRACE WITH 5/16" FL. HD. MACH. SCREW -- CUT OFF ENOUGH FLANGE FROM FITTING TO REMOVE 3 MTG. HOLES -- DRILL THRU FLAT BAR & SECURE MACH. SCREW WITH HEX NUT & LOCKWASHER.

2. INSTALL P46 SET SCREW ONLY AFTER MOUNTING HAS BEEN ORIENTED -- USE DRILL GUIDE & DRILL 1/4" D. HOLE IN STANDARD TO TAKE DOG POINT.

3. CLOSE EACH UNUSED 1-1/2" IPS-TAPPED HOLE IN A1 ADAPTER WITH 1-1/2" PLUG.

ADD 10" FOR EACH ADDITIONAL 8" SECTION, ADD 13-3/8" FOR EACH ADDITIONAL 12" SECTION (EXCEPT OPTICALLY LIMITING), ADD 13-1/2" FOR EACH ADDITIONAL OPTICALLY LIMITING SECTION.

(USE N42-1/2 WITH 12" DIA. SIGNAL HEADS -- USE N45-1/2 WITH OPTICALLY LIMITING SIGNAL HEADS)



NOTE: THIS PLAN IS NOT A LEGAL ENGINEERING DOCUMENT BUT AN ELECTRONIC DUPLICATE. THE SIGNED CITY OF OAKLAND STANDARD DETAILS FOR PUBLIC WORKS CONSTRUCTION IS AVAILABLE FOR PURCHASE FROM THE CONTRACT ADMINISTRATION DEPARTMENT.

T-IV-IV₂-2P 10' STD. **T-IV-IV₂-1P** 10' STD. **T-IV-IV₂** 10- STD.