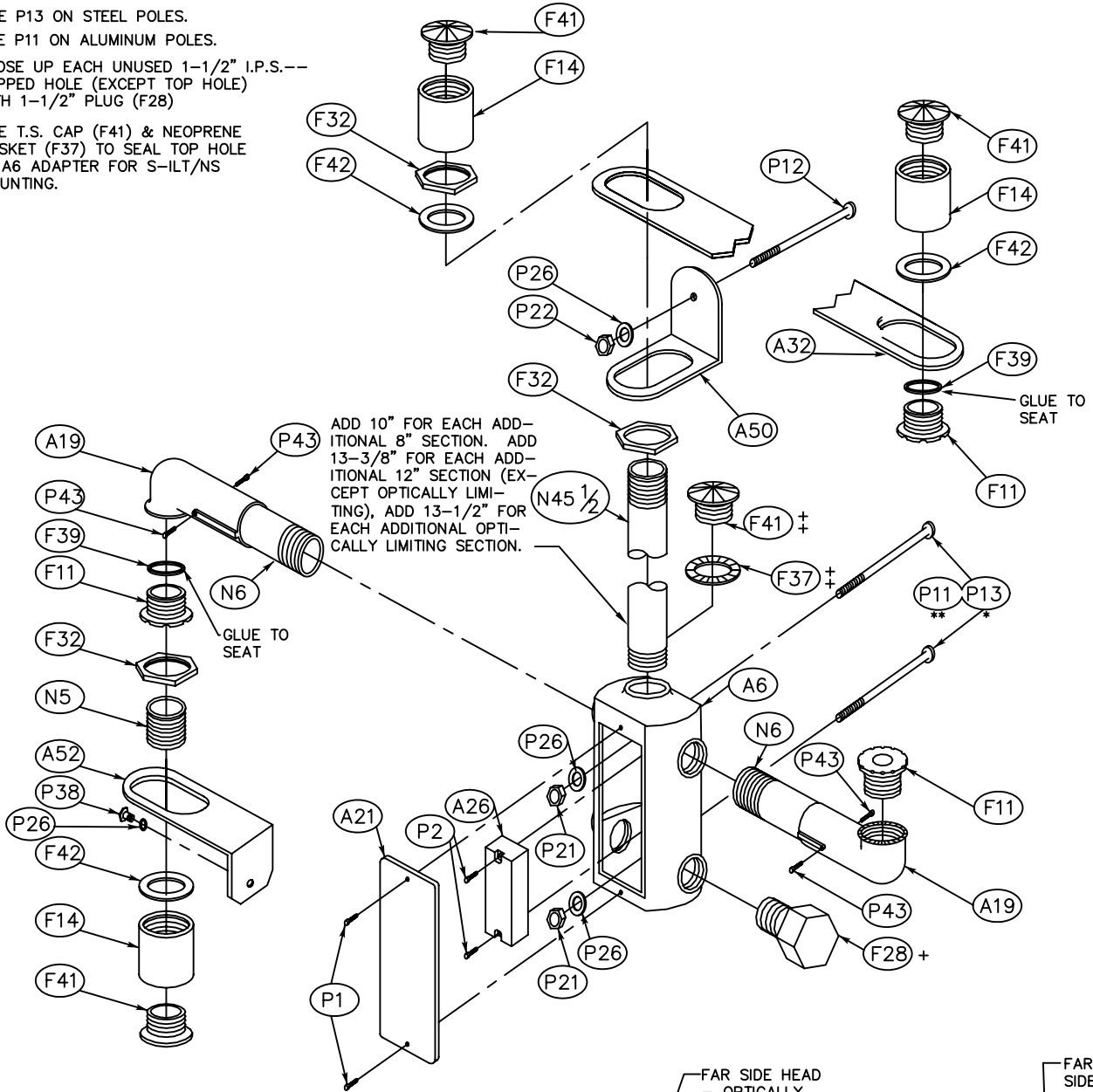
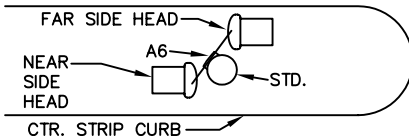


- * USE P13 ON STEEL POLES.
- ** USE P11 ON ALUMINUM POLES.
- + CLOSE UP EACH UNUSED 1-1/2" I.P.S.--- TAPPED HOLE (EXCEPT TOP HOLE) WITH 1-1/2" PLUG (F28)
- ‡ USE T.S. CAP (F41) & NEOPRENE GASKET (F37) TO SEAL TOP HOLE IN A6 ADAPTER FOR S-1LT/NS MOUNTING.



NOTE: THIS PLAN IS NOT A LEGAL ENGINEERING DOCUMENT BUT AN ELECTRONIC DUPLICATE. THE SIGNED CITY OF OAKLAND STANDARD DETAILS FOR PUBLIC WORKS CONSTRUCTION IS AVAILABLE FOR PURCHASE FROM THE CONTRACT ADMINISTRATION DEPARTMENT.



ORIENTATION OF T.S. MOUNTING

