

GROUND STRAPS SHALL BE MADE OF 1 1/4" X 3/16" STEEL FLAT BAR, & GALVANIZED.

TABLE I GROUND STRAP DATA

PC. NO.	FOR USE IN FOUNDATION FOR	DIAMETER OF ANCHOR BOLT CIRCLE	DIAMETER OF ANCHOR BOLT	SIZE OF CONDUIT RISER	DIMENSIONS IN INCHES					
					A	B	C	D	E	L
A53	30' (MAX.) S.L. STANDARD (SERIES SYSTEM)	11'	1"	1 1/4"	1 3/8	2	5 7/16	1 5/16	2	8 3/4
A54	4' PIPE STANDARD (10' MAX. HEIGHT)	7 1/2"	5/8"	2"	1	2 11/16	3 5/8	1 1/16	2 5/16	7
A57	20'-30' STREET LIGHT STANDARD (MULTIPLE)	11'	1"	2"	1 3/8	2 11/16	5 7/16	1 5/16	2 5/16	9 1/16
A60	30' STANDARD W/ STREET LIGHT MAST ARM OR 20' TRAFFIC SIGNAL STANDARD WITH 20' (MAX.) TRAFFIC SIGNAL MAST ARM	12 1/2	1 1/4"	2"	1 5/8	2 11/16	6 3/16	1 3/8	2 5/16	9 7/8
A61	30' STANDARD WITH LUMINAIRE MAST ARM & 30' (MAX.) SIGNAL MAST ARM	14 1/2"	1 1/2"	2"	2	2 11/16	7 3/16	1 3/4	2 5/16	11 1/4
A63	GAMEWELL TYPE PC PED	7 3/4"	1/2"	2"	1	2 11/16	3 3/8	1	2 5/16	6 11/16
A64	3' PIPE STANDARD (F.A. OR P.B. PED.)	6"	5/8"	1 1/4"	1	2	2 15/16	1	1 15/16	5 7/8
A65	TS/SL STD. W/35' TO 45' SIGNAL MAST ARM	17 1/2"	1 3/4"	2"	2 1/4	2 11/16	8 3/4	2	2 5/16	13 1/16

TABLE II U-BOLT DATA

PC. NO.	SIZE	DIMENSIONS IN INCHES					ASA THD.	HEX NUT SIZE
		F	G	H	I	T		
P31	3/8" I.P.S.	3/4	1	1 1/4	3/4	1/4	20 NC	1/4"-20, REG.
P32	3/4" I.P.S.	1 1/8	1 3/8	1 3/8	7/8	1/4	20 NC	1/4"-20, REG.
P33	1" I.P.S.	1 3/8	1 5/8	1 1/2	7/8	1/4	20 NC	1/4"-20, REG.
P34	1 1/4" I.P.S.	1 3/4	2	1 11/16	7/8	1/4	20 NC	1/4"-20, REG.
P35	1 3/4" I.P.S.	1 13/16	2 1/16	2 11/32	1	1/4	18 NC	1/4"-18, REG.
P36	2" I.P.S.	2 7/16	2 3/4	2 1/8	1	5/16	18 NC	5/16"-18, REG.

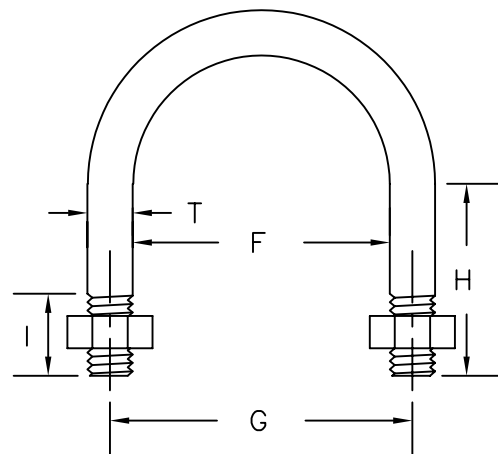


TABLE III GROUND STRAP U-BOLT SETS

GROUND STRAP PC. NO.	U - BOLT PC. NOS.	
	FOR CLAMPING ANCHOR BOLT	FOR CLAMPING CONDUIT
A53	P32	P34
A54	P31	P36
A57	P32	P36
A60	P33	P36
A61	P34	P36
A63	P31	P36
A64	P31	P34
A65	P35	P36

- NOTES:
- EACH U-BOLT SHALL BE FURNISHED WITH 2 HEX NUTS.
 - U-BOLTS & HEX NUTS SHALL BE MADE OF STEEL, GALVANIZED OR CADMIUM PLATED.
 - U-BOLTS MAY BE EITHER STANDARD TYPES COMMERCIALY AVAILABLE (SIZES AS SHOWN IN TABLE II), OR SHOP MADE TO DIMENSIONS IN TABLE II.

NOTE: THIS PLAN IS NOT A LEGAL ENGINEERING DOCUMENT BUT AN ELECTRONIC DUPLICATE. THE SIGNED CITY OF OAKLAND STANDARD DETAILS FOR PUBLIC WORKS CONSTRUCTION IS AVAILABLE FOR PURCHASE FROM THE CONTRACT ADMINISTRATION DEPARTMENT.

CITY OF OAKLAND

DESIGN AND CONSTRUCTION SERVICES DEPARTMENT



GROUND STRAPS & U-BOLTS FOR ELECTROLIER & TRAFFIC SIGNAL STD FOUNDATIONS

ELECTRICAL SERVICES MANAGER

DATE: OCT.95
REV. DATE:

DRWG.

E-32