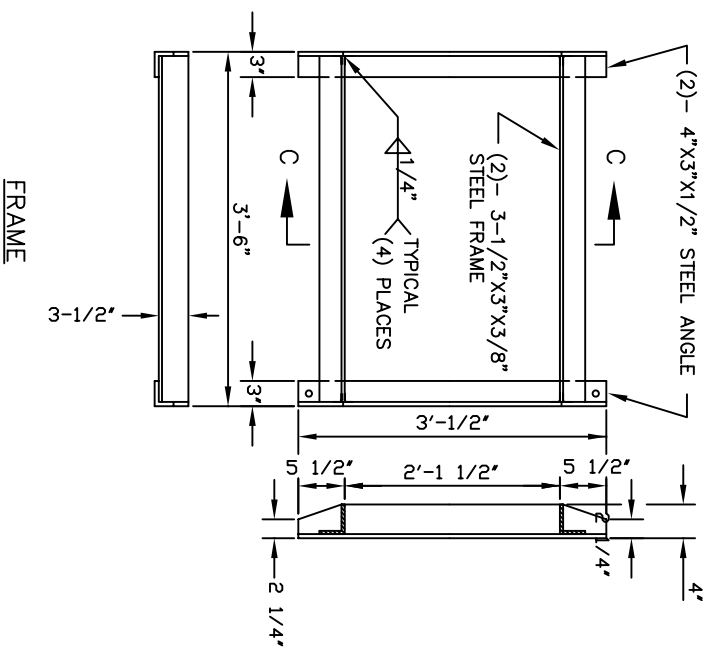
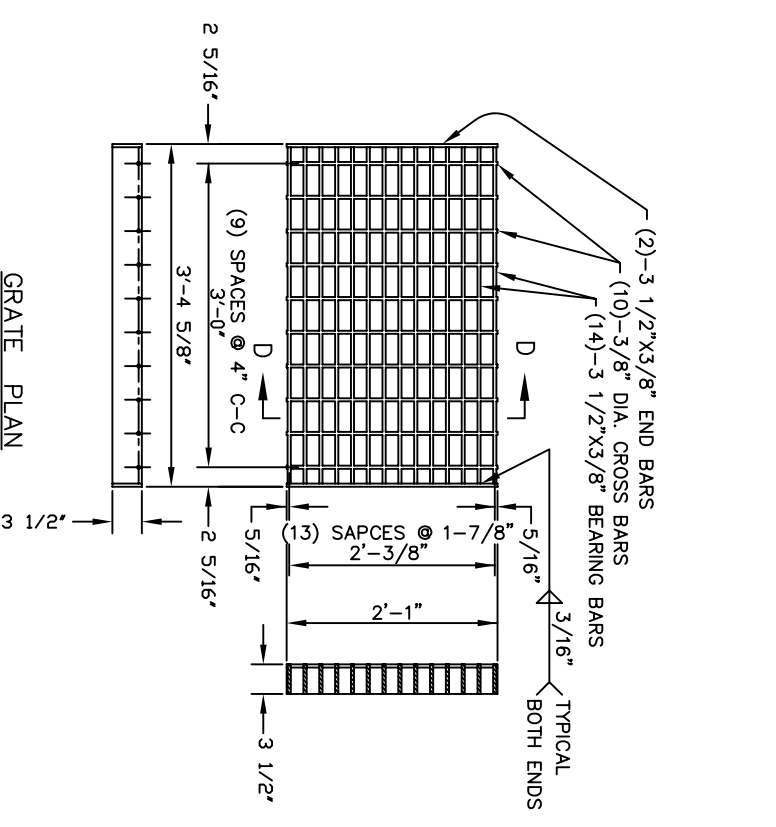


PLAN

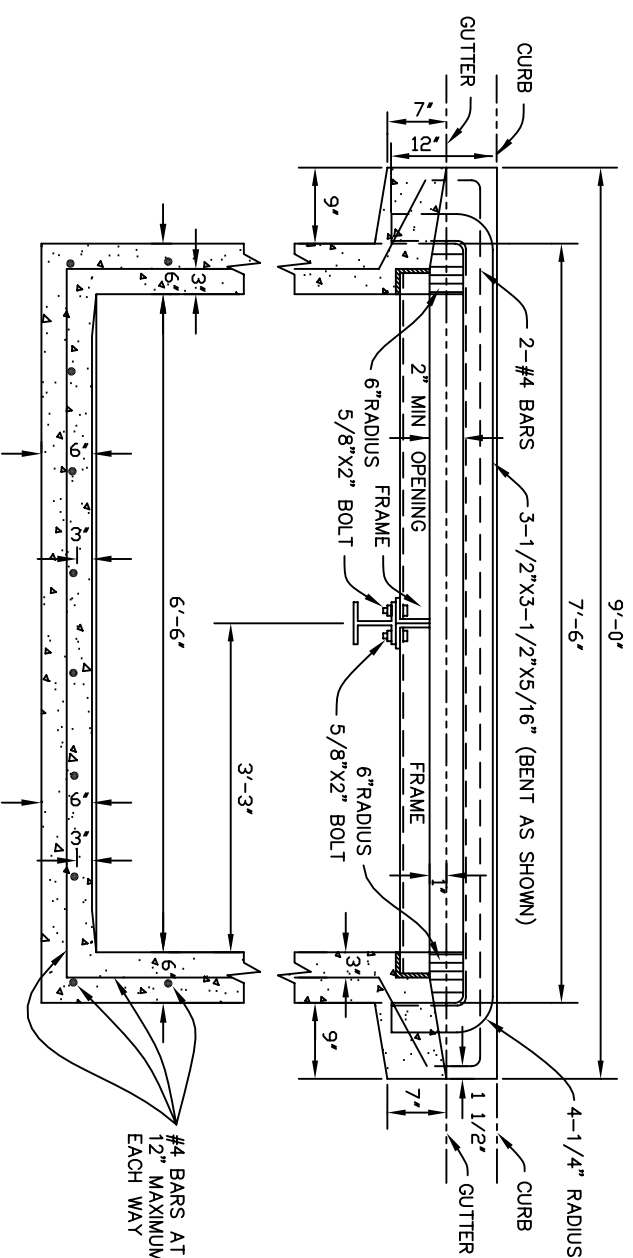


FRAME

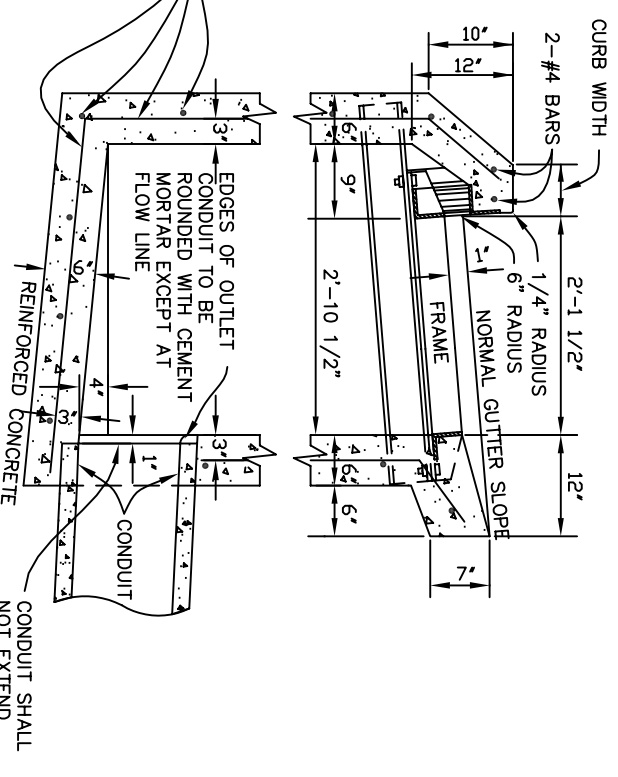


GRATE PLAN

- GENERAL NOTES**
1. LOCATION AND DIRECTION OF CONDUITS ENTERING OR LEAVING INLETS TO BE SHOWN ON GENERAL PLANS.
 2. GRATE AND FRAME SHALL BE ASSEMBLED AND MADE TO FIT BEFORE DELIVERY.
 3. THE GRATE SHALL BE HOT-DIP GALVANIZED IN ACCORDANCE WITH ASTM A-123.
 4. ALL BEARING BARS AND CROSS BARS OF GRATE SHALL BE RESISTANCE WELDED OR ELECTROFORGED INTO A ONE PIECE CONSTRUCTION.
 5. ALL METAL SHALL BE STRUCTURAL GRADE STEEL IN ACCORDANCE WITH ASTM A-36.
 6. A VEE CHANNEL 4" DEEP SHALL JOIN TWO OR MORE CONDUITS ENTERING AN INLET.
 7. CONSTRUCT STEPS IN INLETS WITH A DEPTH OF 4" OR GREATER



SECTION A-A



SECTION B-B

NOTE: THIS PLAN IS NOT A LEGAL ENGINEERING DOCUMENT BUT AN ELECTRONIC DUPLICATE. THE SIGNED CITY OF OAKLAND STANDARD DETAILS FOR PUBLIC WORKS CONSTRUCTION IS AVAILABLE FOR PURCHASE FROM THE CONTRACT ADMINISTRATION DEPARTMENT.

