



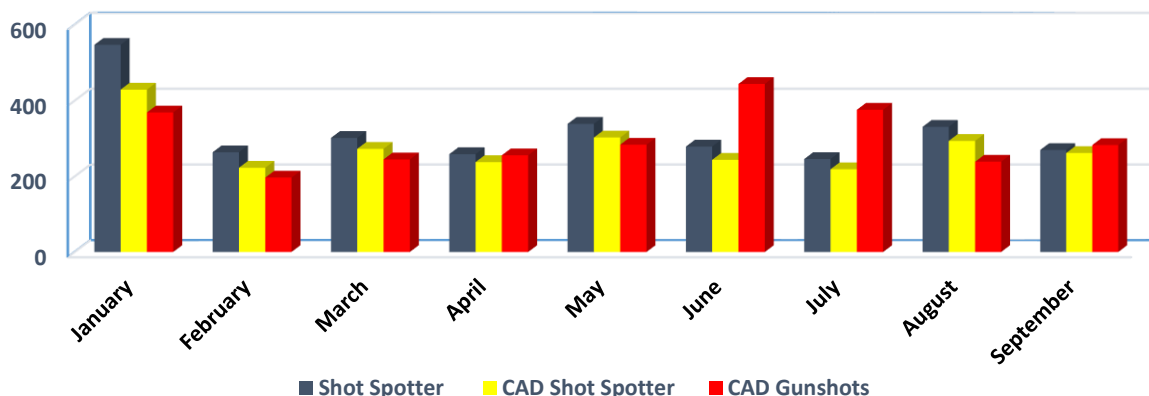
## City of Oakland Shot Spotter Activity *01 January to 30 September 2014*

- Shot Spotter Data taken from Investigative Portal;
- CAD Shot Spotter and Gunshot Calls queried from BiQuery Hummingbird;
- Both Shot Spotter and CAD Shot Spotter Data may capture one incident in more than one report; and
- CAD Gunshot data may pertain to same incident with multiple callers.

DISPOSITION	COUNT
Shot Spotter	2837
CAD Shot Spotter	2485
CAD Gunshot Calls	2692

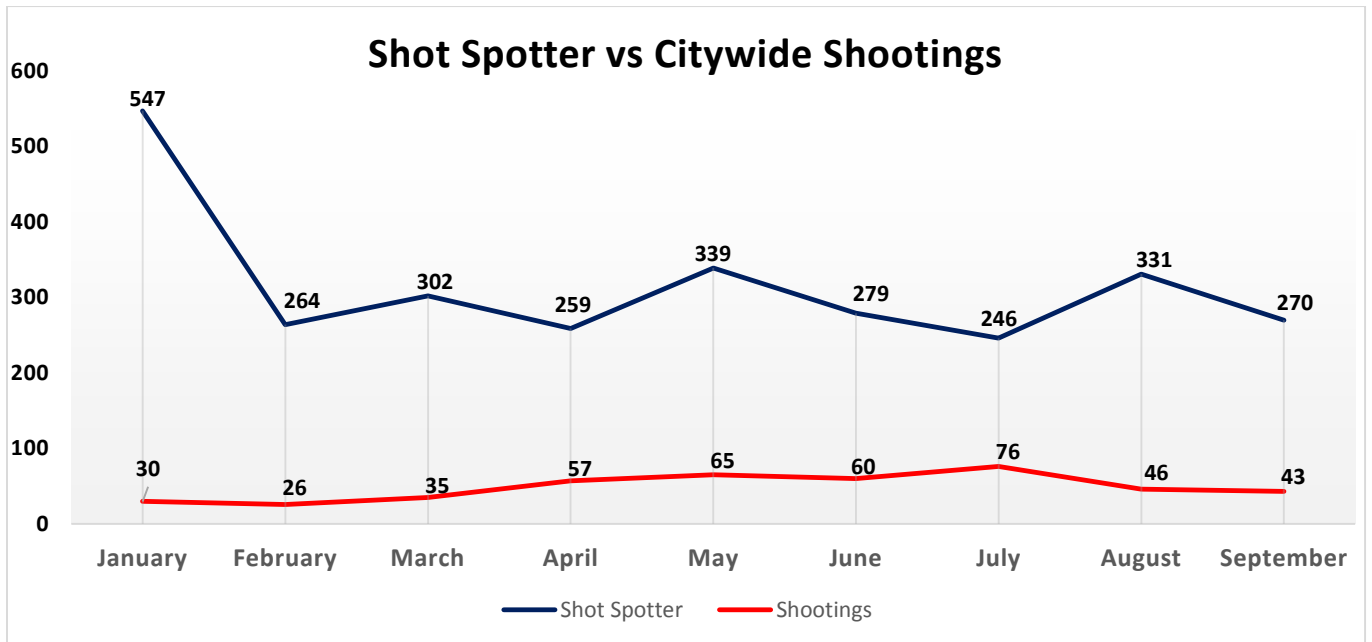
Month	Shot Spotter	CAD Shot Spotter	CAD Gunshots
January	547	429	369
February	264	223	197
March	302	273	245
April	259	238	256
May	339	303	284
June	281	244	444
July	251	219	376
August	331	294	239
September	270	262	283

### Shot Spotter Activation vs CAD



Month	Shot Spotter	Shootings	Percentage of Shootings Per Shot Spotter Activation
January	547	30	5%
February	264	26	10%
March	302	35	12%
April	259	57	22%
May	339	65	19%
June	279	60	22%
July	246	76	31%
August	331	46	14%
September	270	43	16%
<b>TOTAL</b>	<b>2837</b>	<b>438</b>	<b>15%</b>

\*Shootings include PC187, 245(A)(2), 246 & 247



\*\*\* GOING TO CHECK IN SPEEDTRACK RESPONSE RATE/TIME TO SHOT SPOTTER ACTIVATION

Beat	Shot Spotter	CAD Shot Spotter	CAD Gunshot Calls	TOTALS
01X	0	0	11	11
02X	20	21	61	102
02Y	18	21	101	140
03X	0	0	36	36
03Y	0	0	10	10
04X	0	0	40	40
05X	17	30	30	77
05Y	9	7	13	29
06X	16	29	108	153
07X	16	30	73	119
08X	1	3	45	49
09X	0	0	16	16
10X	7	12	68	87
10Y	6	20	90	116
11X	8	13	43	64
12X	1	4	19	24
12Y	4	8	39	51
13X	0	0	6	6
13Y	0	0	16	16
13X	0	0	15	15
14X	0	0	25	25
14Y	0	0	16	16
15X	1	2	18	21
16X	0	0	7	7
16Y	0	0	22	22
17X	7	17	28	52
17Y	12	26	38	76
18X	15	44	14	73
18Y	19	52	33	104
19X	22	48	43	113
20X	31	83	77	191
21X	35	105	50	190
21Y	41	95	90	226
22X	0	1	32	33
22Y	0	3	35	38
23X	51	99	55	205
24X	74	124	61	259
24Y	27	57	55	139
25X	0	1	137	138
25Y	0	0	10	10
26X	8	20	15	43
26Y	83	132	74	289
27X	72	125	82	279
27Y	106	164	72	342

Beat	Shot Spotter	CAD Shot Spotter	CAD Gunshot Calls	TOTALS
28X	10	21	69	100
29X	26	48	110	184
30X	143	243	61	447
30Y	50	83	94	227
31X	0	0	6	6
31Y	0	0	35	35
31Z	0	0	32	32
32X	72	121	55	248
32Y	43	70	78	191
33X	92	167	42	301
34X	118	195	80	393
35X	54	139	78	271
35Y	0	0	3	3
Blank	1548	2	0	1550