



Occupy Oakland General Strike BFO1-2011-0009

02 Nov 11



Situation

- Since the 25 Oct 11 removal of the FOP encampment, Occupy Oakland has re-established a larger encampment in the Plaza
- The City has allowed the group to return to the Plaza to express their freedom of speech
- The Occupy Oakland "General Assembly" has called for a City wide General Strike asking for all City workers/schools to participate in a mass demonstration to shut down "the City"
- The General Assembly is calling for a surge on Downtown Oakland (14th and Broadway) at 0900, 1200 and 1700 and a march on the Port at 1600 and 1700
- Union workers (including the Port) have shown support for Occupy Oakland and may strike
- Their intent is to block all terminals at the Port to disrupt commerce
- Radical elements may attach themselves to the demonstration to conduct disruptive behavior



Mission

The Oakland Police Department, with the assistance of other City Departments and outside LE Agencies, will conduct crowd management and apply the appropriate level of direction and control to:

1. Maintain officer safety
2. Protect life
3. Protect property
4. Protect vital facilities
5. Maintain public peace and order
6. Uphold Constitutional rights of free speech and lawful assembly



Commander's Intent

- Monitor and control the crowds to facilitate a peaceful demonstration and march
- Facilitate marches through the downtown area
- Identify specific individuals who are committing crimes for surgical removal and arrest
- Disperse crowds in an orderly manner to predetermined escape routes if necessary
- Arrest individuals who are in violation of a lawful order to disperse



Intelligence

- Anarchists will be involved with the demonstration
- At 0900, protestors plan to gather at 14th / Broadway and march on businesses
- Protestors plan to enter banks and engage in civil disobedience with the intent of being arrested
- At 1200, protestors again plan to gather at 14th / Broadway and march on businesses
- At 1600, protestors will march to Port beginning with a "Critical Mass"
- At 1700, additional protestors will march to Port
- Protestors mission is to shut down the City



Execution General

- Alpha Company will begin at 0800 hours and remain on standby at the PAB ready to deploy to Downtown
- Bravo and Charlie Company will begin at 1500 hours and deploy to staging area
- ACSO motors will begin at 1000 hours and deploy to Port
- Six ACSO squads will remain on standby to support Port (if needed)



Execution

- OPD MFF will be ready to respond to public safety concerns (violence or substantial vandalism)
- OPD Motors will facilitate march to Port controlling traffic
- CHP will handle the freeway entrances and exits
- ACSO will provide patrols in the Port
- ACSO will deploy additional MFF for Port crowd control if needed
- OPD MFF will address crowd control concerns in the Downtown area
- OPD Marine will patrol waterside of Port (USCG on standby)



Force & Arrest Posture

- OPD may encounter non-violent passive resisters (i.e. individuals that go limp). The following techniques shall be used (TB III-G):
 - Handcuffing
 - Verbal Persuasion
 - Lifting, carrying, use of dollies or stretchers
 - Use of control holds when approved by a sergeant
- OPD may encounter individuals who lock arms. Officers shall inform each individual that they are under arrest and provide verbal direction to give the arrestee a chance to comply before force is used to unlock arms
- Persons who make it clear (e.g. sitting down, locking arms) that they seek to be arrested shall be arrested and not subject to other dispersal techniques, such as the use of batons or chemical agents



Force & Arrest Posture

- OPD will target specific and identified agitators for immediate arrest within the crowd
- Tango teams will identify and target active / violent resisters within crowd (targeted deployment of LLDS rounds and/or targeted arrest)
- OPD will provide unlawful assembly announcement (if needed)
- OPD will engage in arrests of remaining protesters after target individuals have been arrested
- The use of chemical agents may be used and will be authorized by field commanders
- Tasers and Aerosol Handheld Chemical Agents (OC) may not be used indiscriminately against crowds but only against individuals engaged in serious unlawful conduct or who are actively resisting (TB III-G)



Force & Arrest Posture

- Outside LE agencies should only deploy chemical agents at the direction of OPD
- Outside LE agencies should not use electronic weapons on crowds
- Outside LE agencies should not use weapon launched less-than-lethal impact munitions unless directly threatened by an individual who is an imminent threat to their safety



Execution Time Line

- 2 Nov 11/0700 – EOC Activated (1st Op Period)
- 2 Nov 11/0800 – MFF Briefing – Alpha Company
- 2 Nov 11/1000 – ALCO motors deployed to Port
- 2 Nov 11/1500 – MFF Briefing – Bravo and Charlie Company
- 2 Nov 11/1700 – Deploy MFF Downtown for march
- 2 Nov 11/1900 – EOC (2nd Op Period)
- TBD – Demobilization



Media

- The media has an absolute right to be at protests and riots
- They are free to move where ever they want
- Leave the media alone and focus on protesters and those committing criminal acts
- When in doubt, “Let the media film”
- If they ask for a statement/questions, direct them to the PIO



Administration Mass Arrests

- Two prisoner transport vans
- OPD Mobile booking team (if needed)
- Review of Mass Arrest (Sgt. Donelan)



Administration Report Writing

- A Use of Force of Force report writer has been designated for this event
- A primary crime report writer has been designated for this event
- Review of Report Writing/Report Collection
- ALL Personnel involved in operation will required to complete supplemental report
- Stop Data reporting is suspended during MFF operations.
- PDRD's are to be worn. During MFF operations, activate when directly engaged with crowd



Administration

- Statistical data forms will be given to each officer and supervisor
- Statistical data forms will be turned into each Mobile Field Force Commander for an After Action Report
- Mass OT forms will be given to each supervisor to document pay for their assigned personnel
- Mass OT forms will be turned into each Mobile Field Force Company Commander



Command Structure (0700-1900)

- Incident Commander—D/C Israel
- Operations Chief—Capt. Tull
- Planning Chief—Lt. Shannon
- Logistics Chief—Capt. Poulson
- Finance Chief—Dep. Dir. Garcia



Command Structure (1900-0700)

- Incident Commander—D/C Breshears
- Operations Chief—Capt. Allison
- Planning Chief—Lt. Whent
- Logistics Chief—Lt. Parris
- Finance Chief—NONE

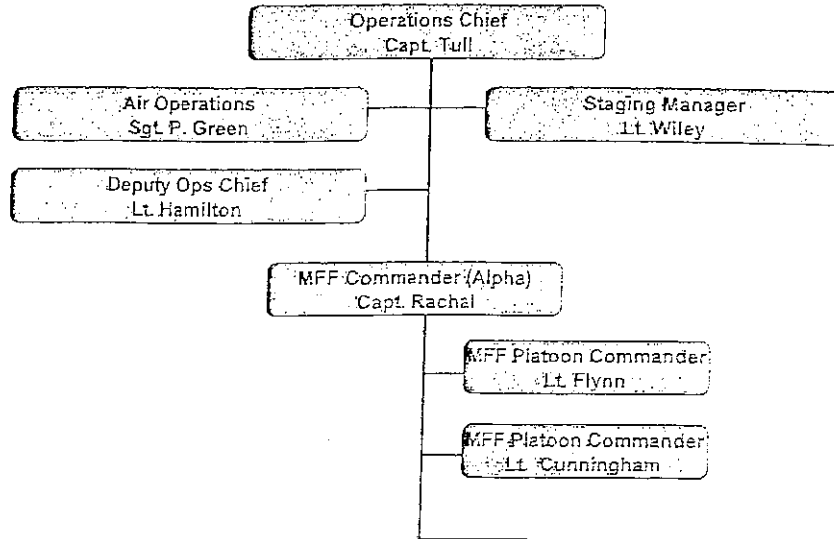


MFF Command

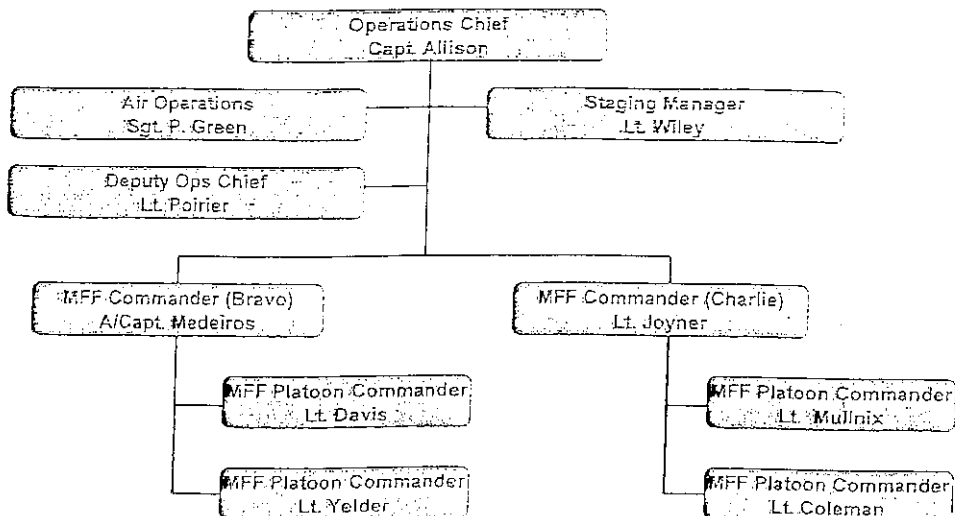
- Alpha Company (OPD)—Capt. Rachal
- Bravo Company (OPD)—A/Capt. Medeiros
- Charlie Company (OPD) – Capt. Joyner



Operations Command Structure for Day Shift (0700-1900)

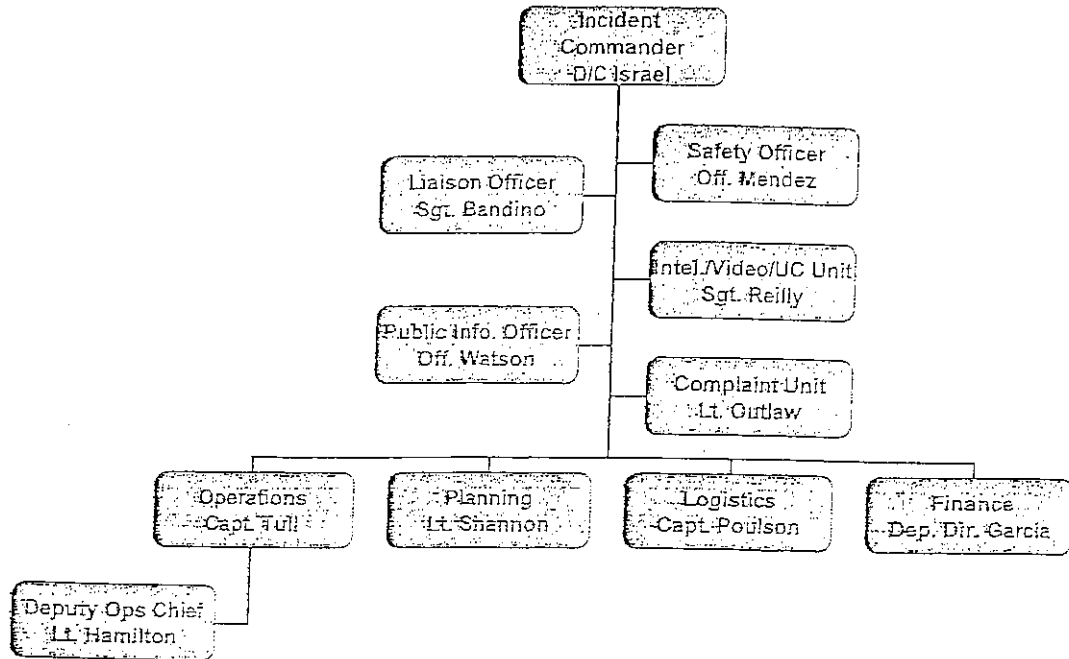


Operations Command Structure for Night Shift (1900-0700)

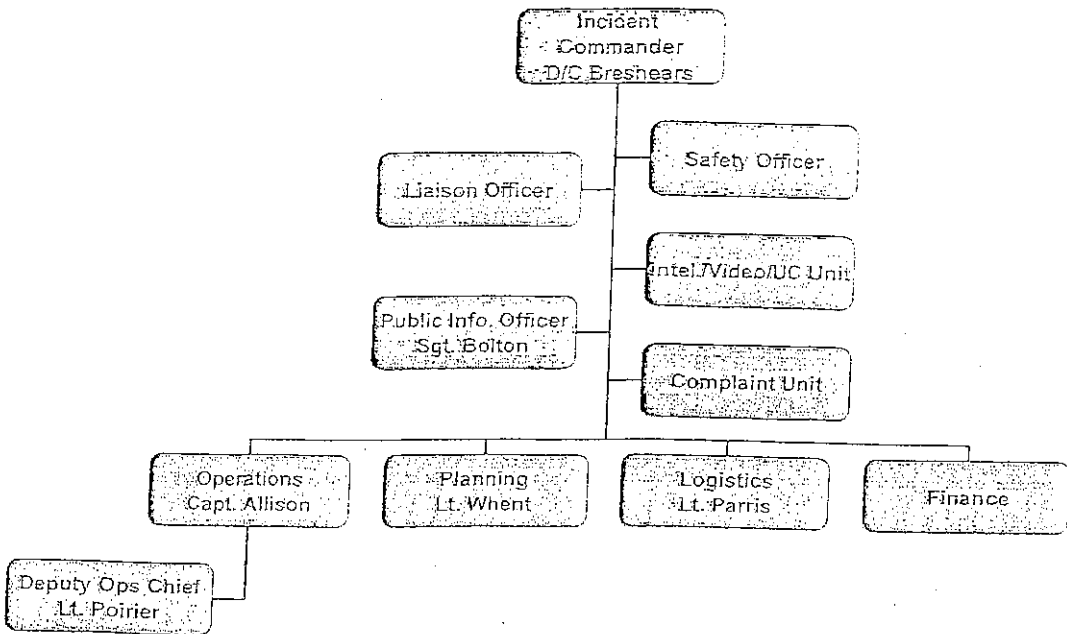




Incident Command Structure for Day Shift (0700-1900)



Incident Command Structure for Night Shift (1900-0700)





Equipment

- Long sleeve BDU's
- Riot helmet with number attached
- Long baton
- Gas mask with holder
- At least four flex cuffs per officer (marked with serial #)
- Safety Glasses
- Prisoner wagons and Booking should have wire cutters on hand



Final Instructions

- Obtain statistic form
- Sergeants obtain Mass OT form
- Equipment/Radio Check
- MFF report to staging area



End