



Occupy Oakland Frank Ogawa Plaza BFO1-2011-0007

25 Oct 11



Situation

- Occupy Oakland has established a large encampment at FOP (200-300 / day and 150 / night)
- This group is well organized and has support
- The City allowed the group remain in the Plaza to express their freedom of speech
- Individuals within the Plaza have been openly hostile to Law Enforcement
- Upon contact with officers, individuals have formed skirmish lines and some have put on padded clothing
- Conditions within FOP have been deteriorating
- As of Thursday (20 Oct), the Occupy Oakland group has been informed that they can no longer remain in FOP overnight
- Additionally, there is a smaller encampment at Snow Park (19th / Harrison) who are not allowed to camp overnight



Mission

The Oakland Police Department, with the assistance of other City Departments and outside LE Agencies, will conduct crowd management to remove the encampment at FOP. Additionally, the OPD will remove the smaller encampment at Snow Park. This will be done with an effort to:

1. Maintain Officer Safety
2. Protect life
3. Protect property
4. Protect Vital Facilities
5. Maintain public peace and order
6. Uphold constitutional rights of free speech and lawful assembly



Commander's Intent

- Surround and contain the encampment at FOP
- Announce to everyone in the encampment that they are in violation of the law and subject to arrest
- Order everyone in the encampment to gather their possessions and leave the Plaza
- Arrest all law violators who do not leave the Plaza
- Collect and remove the personal property left inside the Plaza
- Prevent outside agitators from entering the Plaza during the operation
- Remove the smaller encampment at Snow Park once FOP is secure using the same tactics



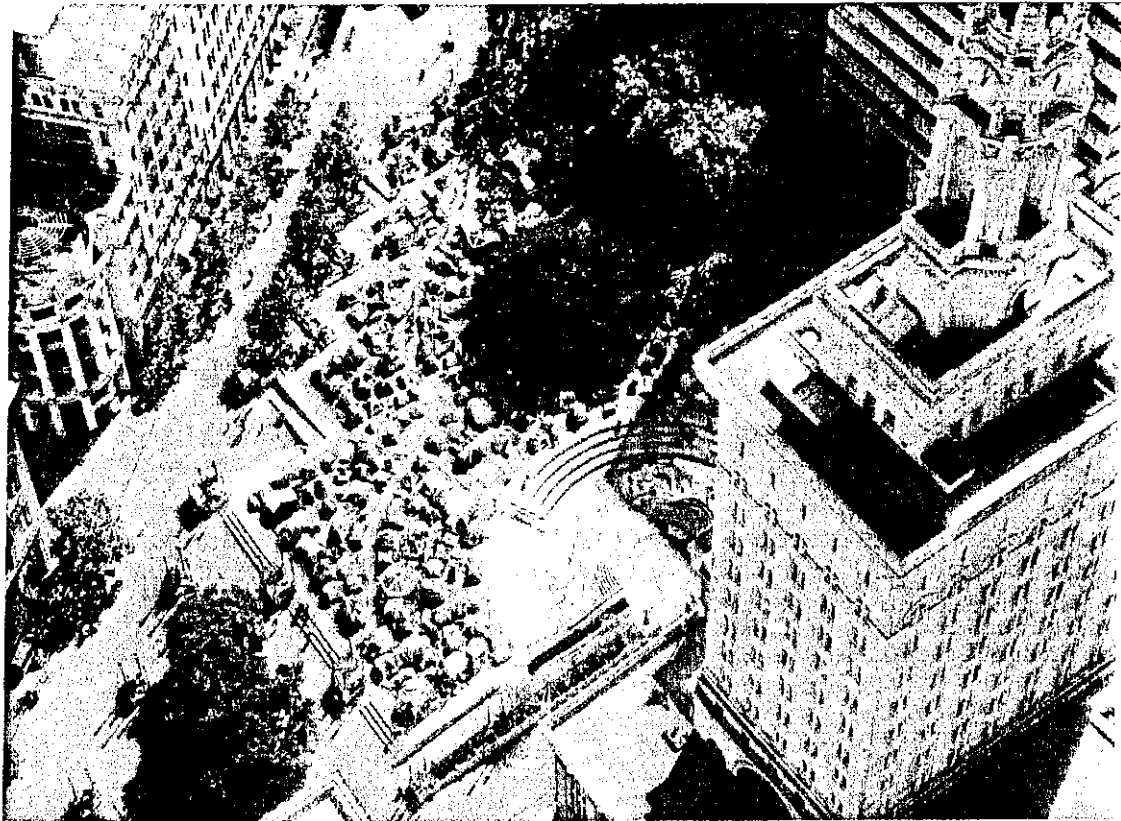
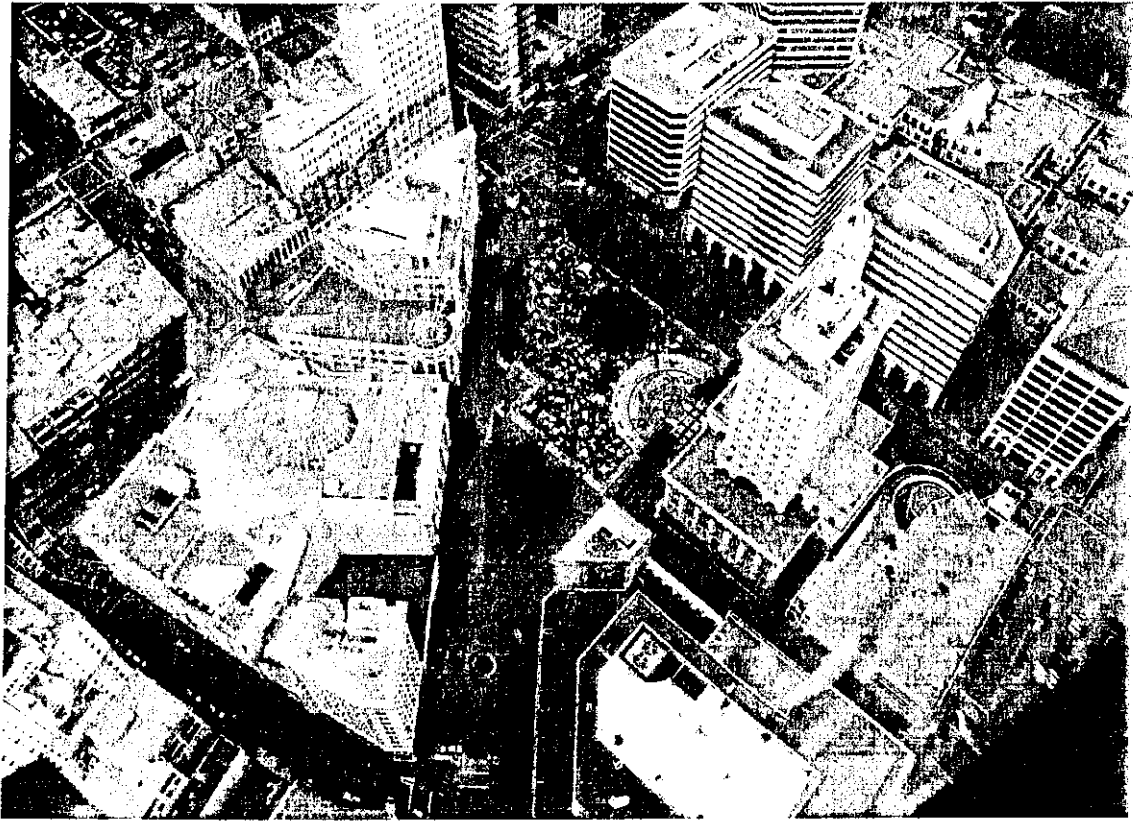
Intelligence

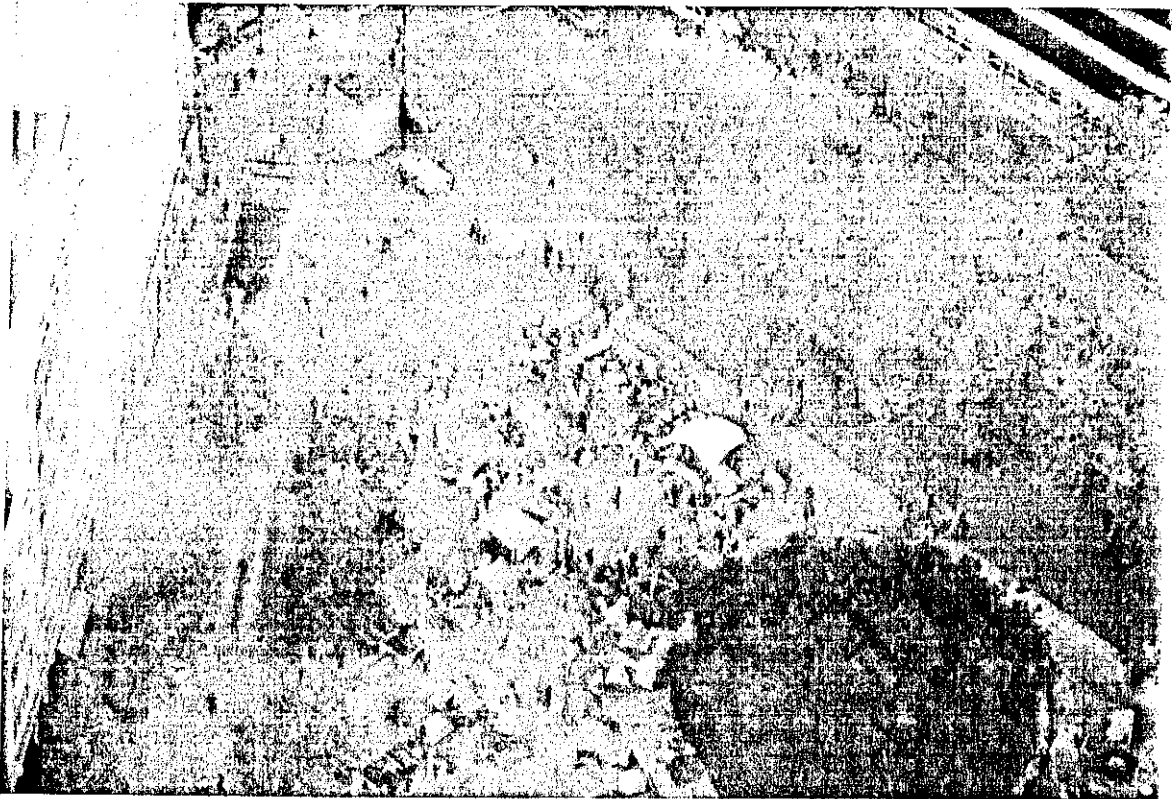
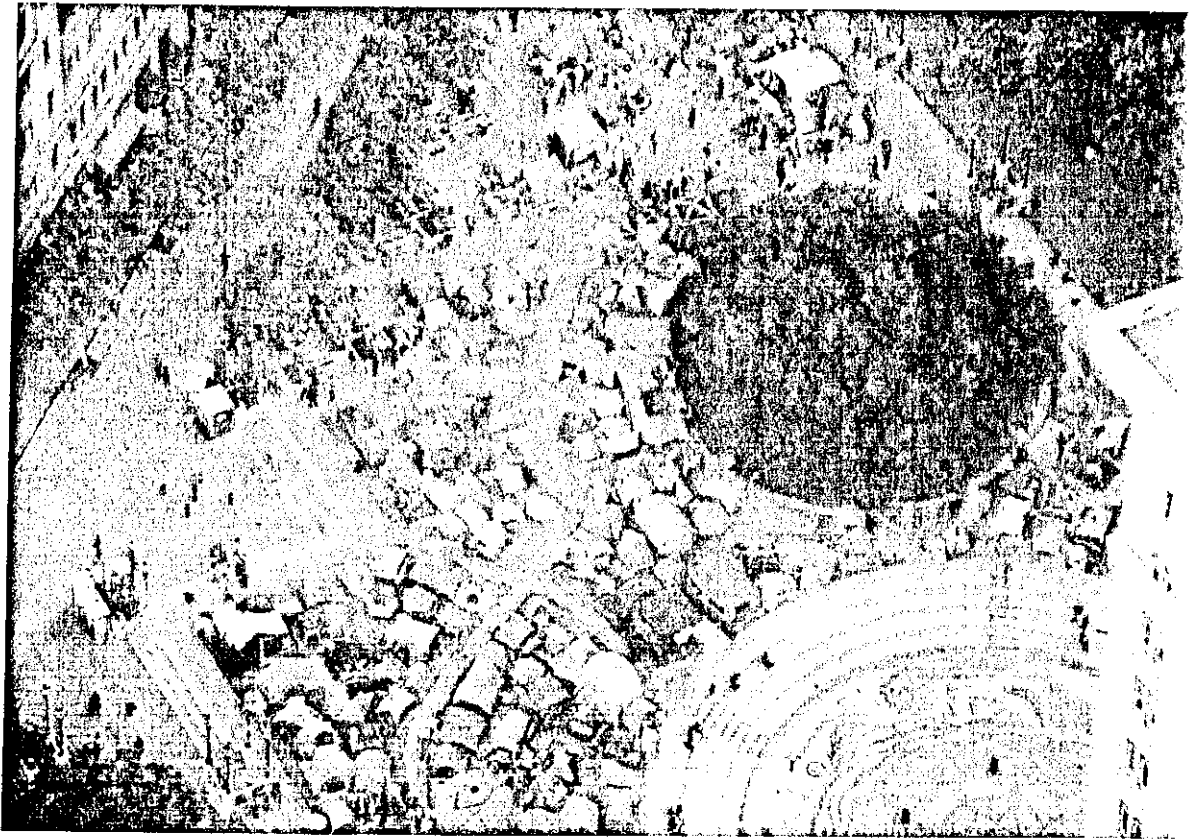
- Crowd size remains consistent; approx. 200-300 during their evening general assembly / marches / events and 60-100 overnight
- Early morning numbers have been consistent with 30-40 awake and another 50-60 in tents
- Perimeter security is constant with handheld radios
- An individual in the Plaza was seen with a large knife
- There is a structure in the N/W portion in the encampment supported by several long 2X4s
- About four children were seen late at night (2300) and in the morning but it is unknown if they spend the night
- Five to Six dogs have been seen in the Plaza overnight (a Pitbull bit an individual on Sun)

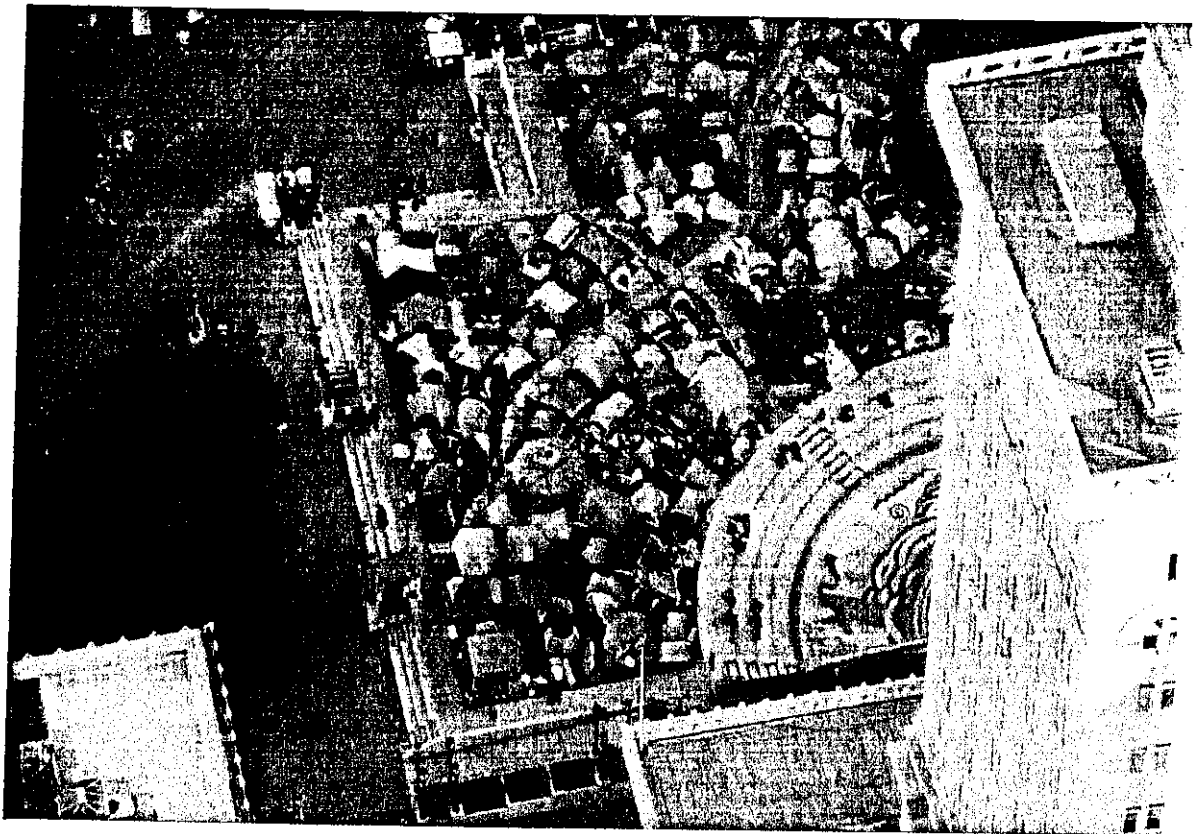
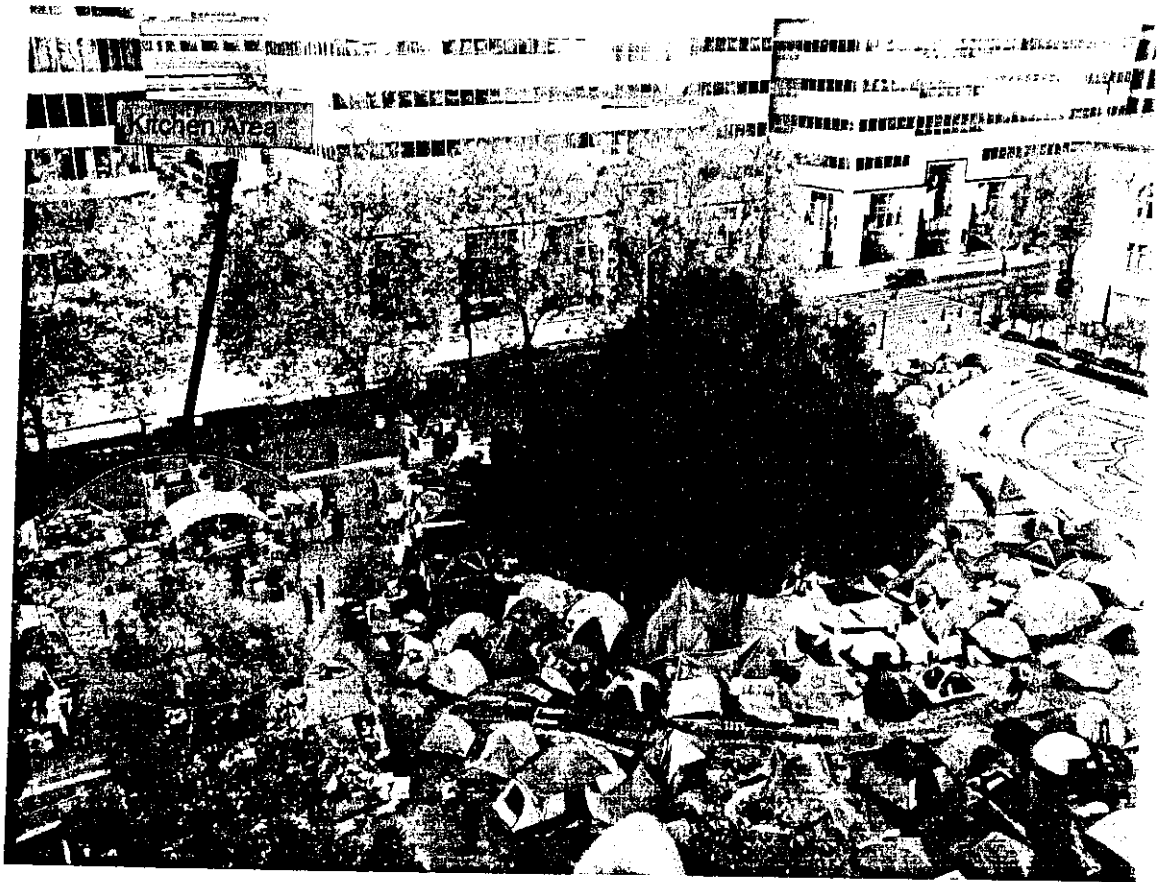


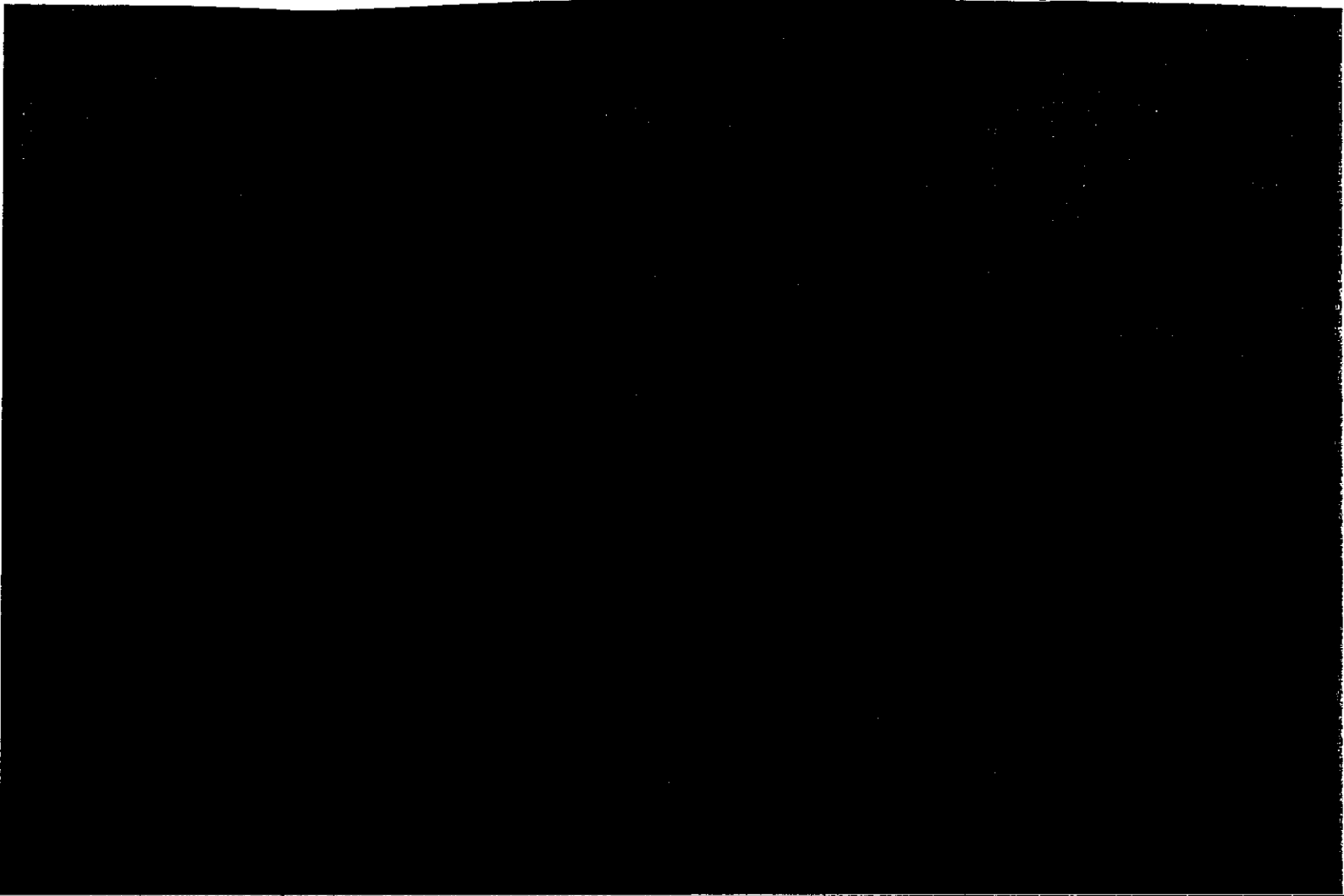
Intelligence

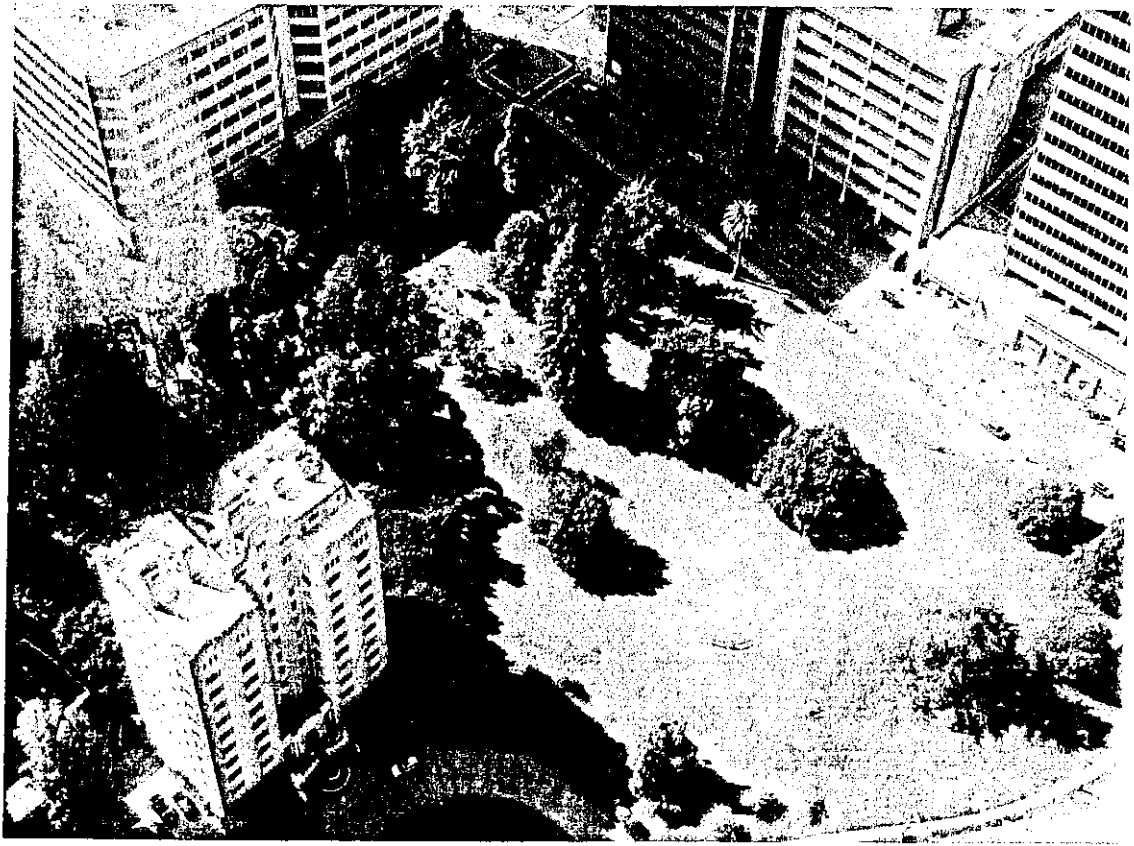
- General Assembly topics have included:
 - Pending law enforcement action
 - The most recent communiqué from the City to leave Plaza (read verbatim)
 - Possible law enforcement tactics (speaker called for the encampment to hold strong and not fold)
 - Lynching anyone LE arrests
 - Sending word out through social networking and phone tree to summon assistance when LE arrives (forcing LE to address two fronts)
 - Several tweets and postings calling for defense of the camp and indicating that the best tactic is not to fight with LE but sue later.
 - Forming an interior and exterior ring when LE arrives
 - Filming officers
 - Evacuating critical equipment when LE arrives

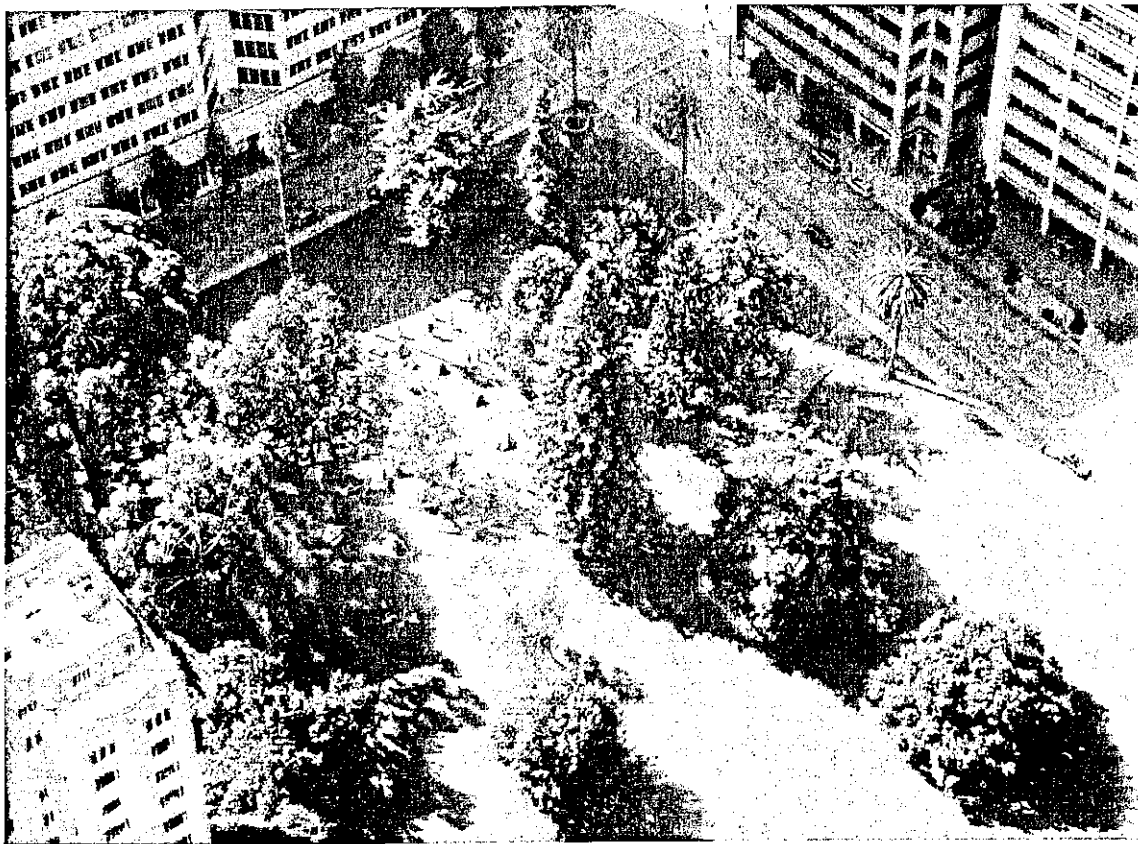












Execution - General

- Alpha, Bravo and Charlie Companies, with outside LE Agencies, will begin at 0200 hours and deploy directly to the FOP area
- All three Companies will establish containment around the encampment upon arrival
- Outside agencies will provide blocking forces, re-enforce the containment and establish an outer perimeter and traffic control
- All MFF personnel will facilitate the dispersal or arrest of individuals in the Plaza and at Snow Park
- Demobilization - TBD



Execution

- Alpha will provide North containment at the foot of San Pablo (park west of San Pablo on 16th St).
 - Bravo will provide Southeast containment across 14th St at Broadway (park on Broadway N/14th St). Bravo will also block the east entrance to CC on 14th St.
 - Charlie will provide Southwest containment across 14th St at City Hall (park on 14th St W/City Hall). Charlie will also block the West Plaza alley (North of City Hall) and the west entrance to CC on 14th St. enter the Plaza from the southeast taking the south containment
-



Execution

- Announcements will be made stating the following:
 - Everyone in the Plaza is in violation of 647(e) PC – Unlawful Lodging and subject to arrest
 - Everyone must immediately collect their possessions and leave the Plaza toward Broadway
 - Anyone that does not make an effort to leave will be arrested
- If individuals choose to remain to be arrested, they will be told to sit on the ground with hands in the air
- Attempts will be made to identify leadership or spokesperson



Execution

- If individuals approach the inner containment lines and are not leaving, they will be immediately arrested for 647(e) PC
- If individuals passively resist or link arms, they will be arrested for 647(e) PC
- If individuals remain in the interior of the encampment and do not leave, the MFF will move toward the encampment and surround it making arrests as they contact violators
- If individuals refuse to exit their tent, officers will attempt to safely open the tent. If unable to safely open, box cutters will be provided to cut open the tent and make arrests (should designate a team of 3-4 officers)



Force & Arrest Posture

- OPD will instruct all occupants of the Plaza to leave the Plaza with their possessions.
- OPD will allow individuals to leave through the East Plaza alley to north bound Broadway.
- OPD will arrest all law violators in FOP who do not leave using the reasonable amount of force necessary
 - Tasers and Aerosal Handheld Chemical Agents (OC) shall not be used for crowd management, crowd control or crowd dispersal (TB III-G)
 - Tasers and Aerosal Handheld Chemical Agents (OC) may not be used indiscriminately against crowds but only against individuals engaged in serious unlawful conduct or who are actively resisting (TB III-G)



Force & Arrest Posture

- OPD may encounter non-violent passive resisters (i.e. individuals that go limp). The following techniques shall be used (TB III-G):
 - Handcuffing
 - Verbal Persuasion
 - Lifting, carrying, use of dollies or stretchers
 - Use of control holds when approved by a sergeant
- OPD may encounter individuals who lock arms. Officers shall inform each individual that they are under arrest and provide verbal direction to give the arrestee a chance to comply before force is used to unlock arms
- Persons who make it clear (e.g. sitting down, locking arms) that they seek to be arrested shall be arrested and not subject to other dispersal techniques, such as the use of batons or chemical agents



Force & Arrest Posture

- OPD will target specific and identified agitators for immediate arrest within the crowd
- Tango teams will identify and target active / violent resisters within crowd (targeted deployment of LLDS rounds and/or targeted arrest)
- OPD will provide instruction to crowd to submit to arrest
- The use of chemical agents may be used and will be authorized by field commanders (immediate threat) or incident commander (all other uses)



Force & Arrest Posture

- Outside LE agencies should only deploy chemical agents at the direction of OPD
- Outside LE agencies should not use electronic weapons on crowds
- Outside LE agencies should not use weapon launched less-than-lethal impact munitions unless directly threatened by an individual who is an imminent threat to their safety



Execution Time Line

- 25 Oct 11/0000 – EOC Activated
 - 25 Oct 11/0100 – Staging area active and ready to receive personnel
 - 25 Oct 11/0200 – MFF line up briefing
 - 25 Oct 11/0330 – Rehearsal of movement
 - 25 Oct 11/0415 – Move to FOP
 - 25 Oct 11/0445 – Arrive at objective / establish perimeter
 - 25 Oct 11/1400 – Briefing for evening MFF Personnel
-



Media

- The media has an absolute right to be at protests and riots
- They are free to move where ever they want
- Leave the media alone and focus on protesters and those committing criminal acts
- When in doubt, "Let the media film"
- If they ask for a statement/questions, direct them to the PIO



Administration Mass Arrests

- Three prisoner transport vans
- Mobile booking team (ALCO)
 - Prisoner Transport Bus on Clay St at 14th St
- Review of Mass Arrest (Sgt. Donelan)
- An Evidence / Property Collection Team has been designated for this event (Sgt. Babka)



Administration Report Writing

- A Use of Force of Force report writer has been designated for this event
- A primary crime report writer has been designated for this event
- Review of Report Writing/Report Collection (Sgt. VanSloten)
- ALL Personnel involved in operation will required to complete supplemental report
- Stop Data reporting is suspended during MFF operations.
- PDRD's are to be worn. During MFF operations, activate when directly engaged with crowd



Administration

- Statistical data forms will be given to each officer and supervisor
- Statistical data forms will be turned into each Mobile Field Force Commander for an After Action Report
- Mass OT forms will be given to each supervisor to document pay for their assigned personnel
- Mass OT forms will be turned into each Mobile Field Force Company Commander

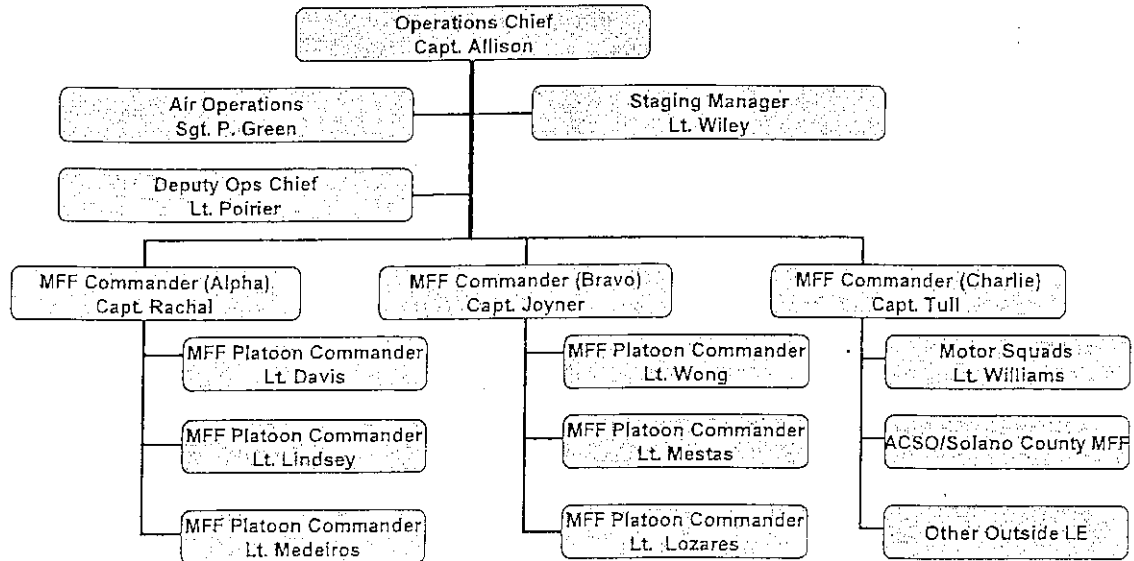


Command Structure

- Incident Commander—D/C Israel
- Operations Chief—Capt. Allison
- Planning Chief—Lt. Whent
- Logistics Chief—Capt. Poulson
- Finance Chief—Dep. Dir. Garcia



Operations Command Structure for Alpha Shift (0200-1400)



Equipment

- Long sleeve BDU's
- Riot helmet with number attached
- Long baton
- Gas mask with holder
- At least four flex cuffs per officer (marked with serial #)
- Safety Glasses
- Bio hazard mask / Latex Gloves
- Prisoner wagons and Booking should have wire cutters on hand

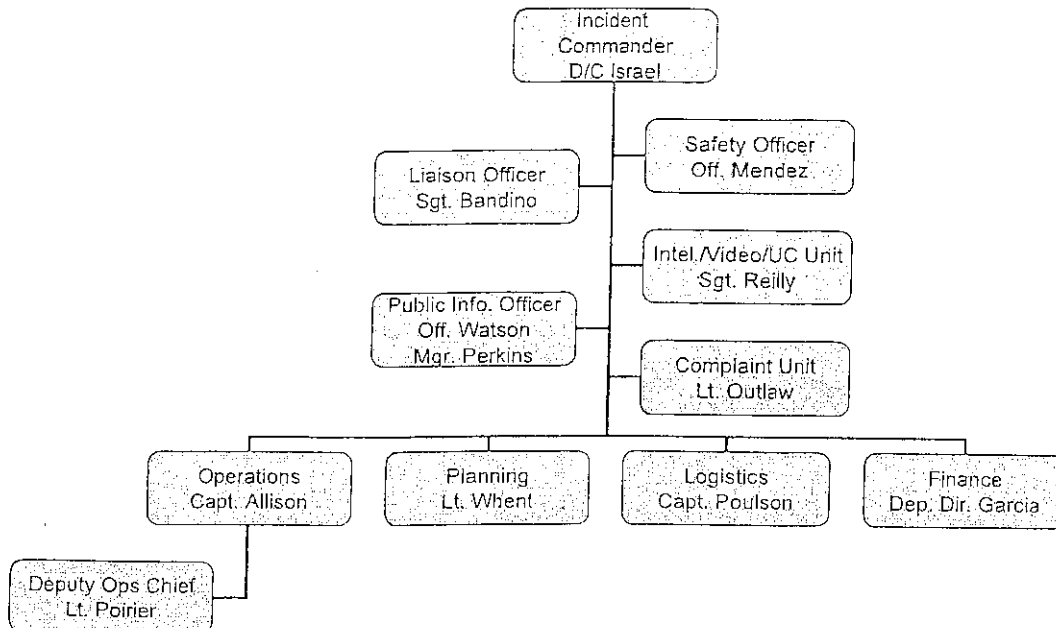


MFF Command

- Alpha Company (OPD)—Capt. Rachal
- Bravo Company (OPD)—Capt. Joyner
- Charlie Company (Outside LE)—Capt. Tull
 - ACSO (50)
 - Solano County (40)
 - Fremont PD (12)
 - Hayward PD (25)
 - Alameda PD (6)
 - San Leandro PD (14)
 - Union City PD (12)
 - Emeryville PD (6)



Incident Command Structure for Day Shift (0200-1400)





Final Instructions

- Obtain statistic form
- Sergeants obtain Mass OT form
- Equipment/Radio Check
- Company Commanders organize Platoons on buses (rehearsal)
- Move vehicles into order of march
- Move out to FOP



End